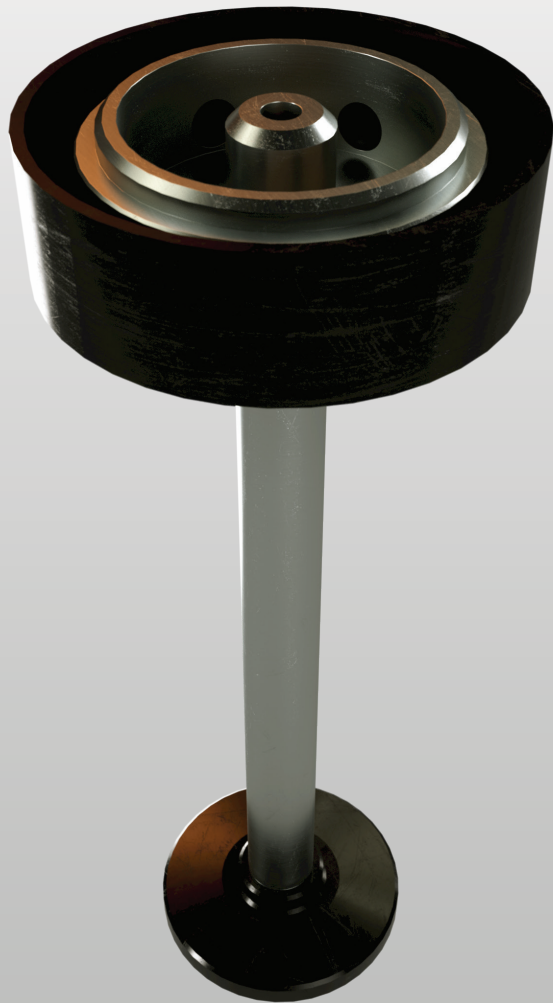




TopJet™

Norwegian Operator saves valuable rig time using TopJet



CASE HISTORY

Churchill Drilling Tools' TopJet™ top-filling coupling saves major Norwegian operator hours of rig time across three separate liner & completions setting runs

TopJet™ rig floor device, was used to top-fill drill pipe during liner and completions running operations, significantly cutting down on fill-up times, while at the same time eliminating rig floor spillage and improving safety. The coupling was utilised over three runs, across two subsequent wells, and saved an average of 2 hours and 20 minutes per run, reducing the open hole exposure times and thus minimising the risk of section collapse.

CIRCUMSTANCES

The operator was actively seeking ways to speed-up tripping and shorten open hole exposure times, to maximise the chance of successful liner and completion assembly installation.

THE CHALLENGE

Every time either the liner or completions assemblies were run in hole on 5" drill pipe, the closed ended string had to be top filled every 10 stands. The process was time consuming and posed a rig floor safety hazard, as the mud splattered and spilled when it was pumped from a top drive positioned directly above the pipe.

THE SOLUTION

A standard TopJet™ coupling compatible with 5" drill pipe was utilised for the first time during an intermediate completion run. Before each top-filling interval, the tool was placed manually on top of the pipe set in slips, before lowering and resting the top drive on top. Each time, mud was jetted in through the coupling at ~185gpm venting the air out at the same time, and filling the pipe in just under 5 minutes. The same process was repeated on the subsequent well's liner and completion setting runs with similar jetting rates. When compared to traditional method of trickling the mud in at ~40gpm, the operator confirmed savings of more than 10 minutes per top-fill interval. This equates to more than 140 minutes saved on

COMMENTS

'The tool worked really well. We've saved over 2 hours on each run' - DE

